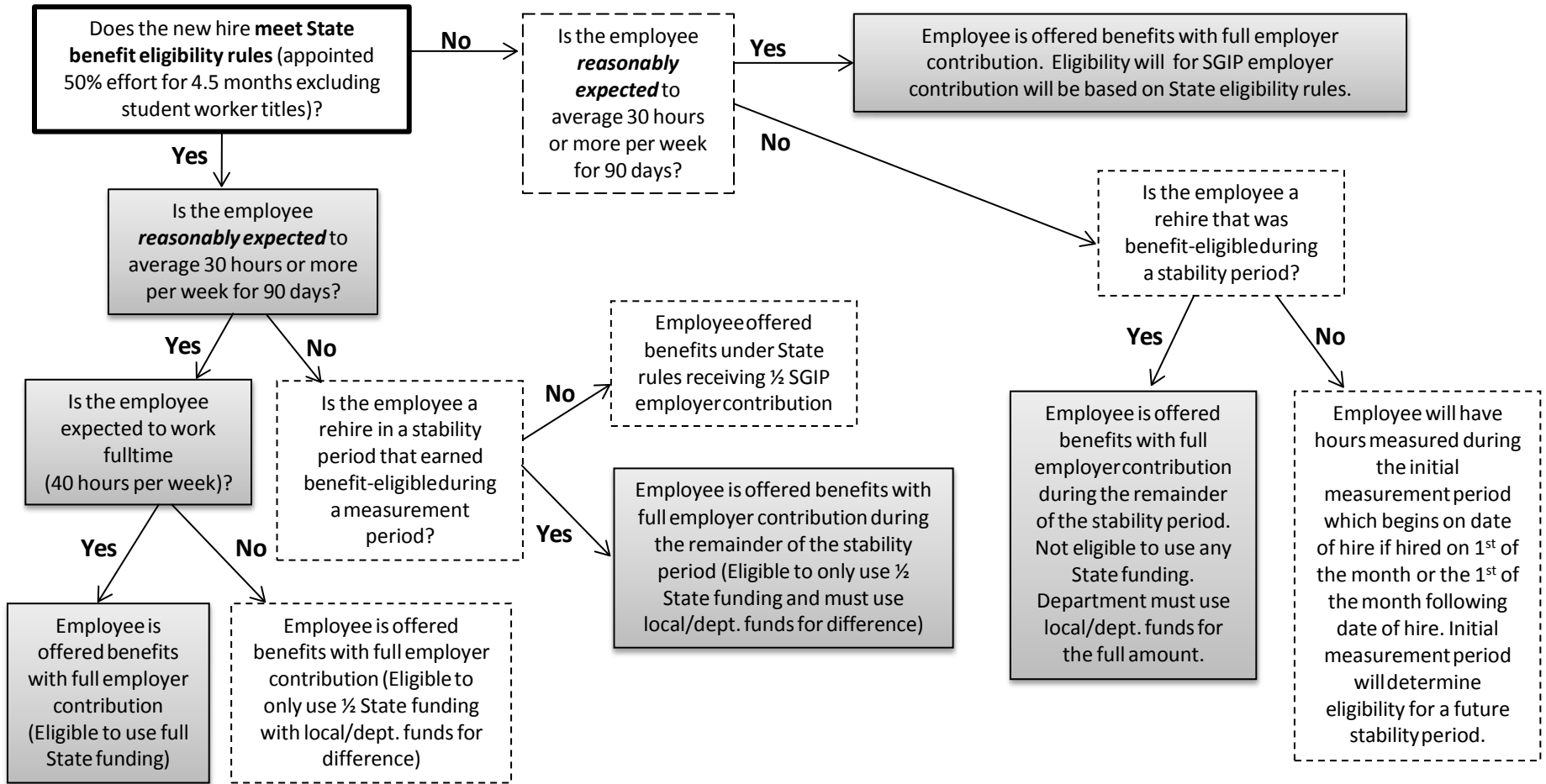


# Determining Benefit Eligibility for New Hires/Rehires



**NOTE:**

- Benefit eligibility must be reevaluated if there is a change of status during the initial measurement period or with respect to breaks in service.
- Employees meeting eligibility through a measurement period (including budgeted fulltime employees) will receive benefits for the duration of the subsequent stability period without regard to actual hours worked/paid during the stability period provided their employment continues within the A&M System.
- Employees deemed benefit-eligible solely by reason of Affordable Care Act (ACA) will only be offered medical and basic life coverage.